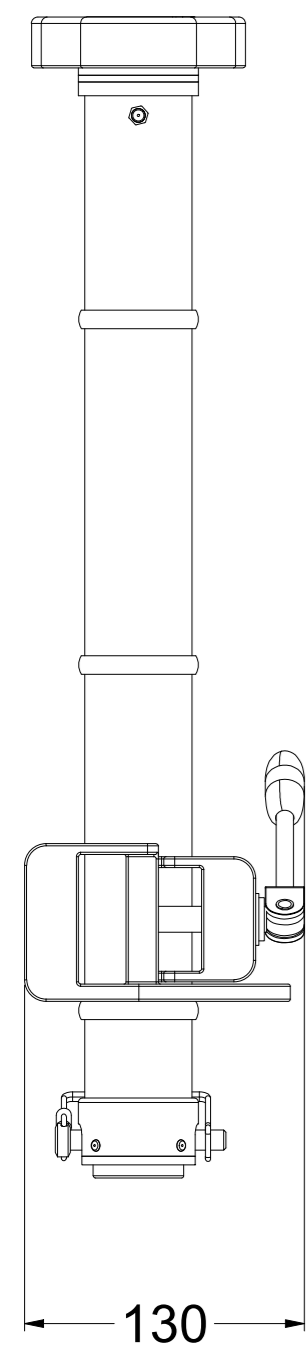
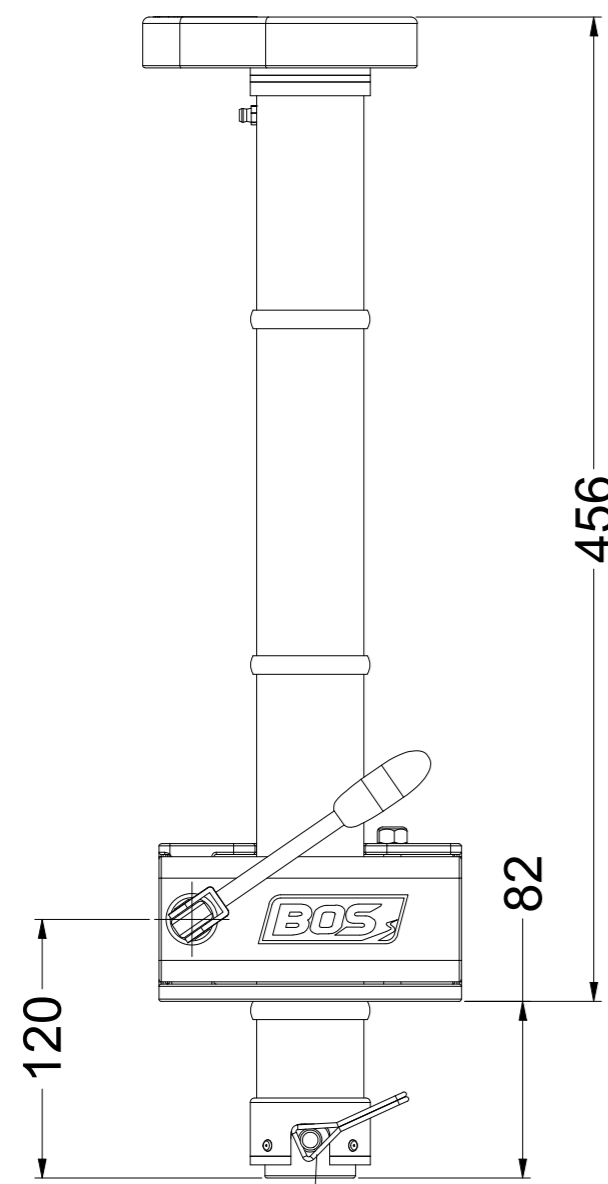


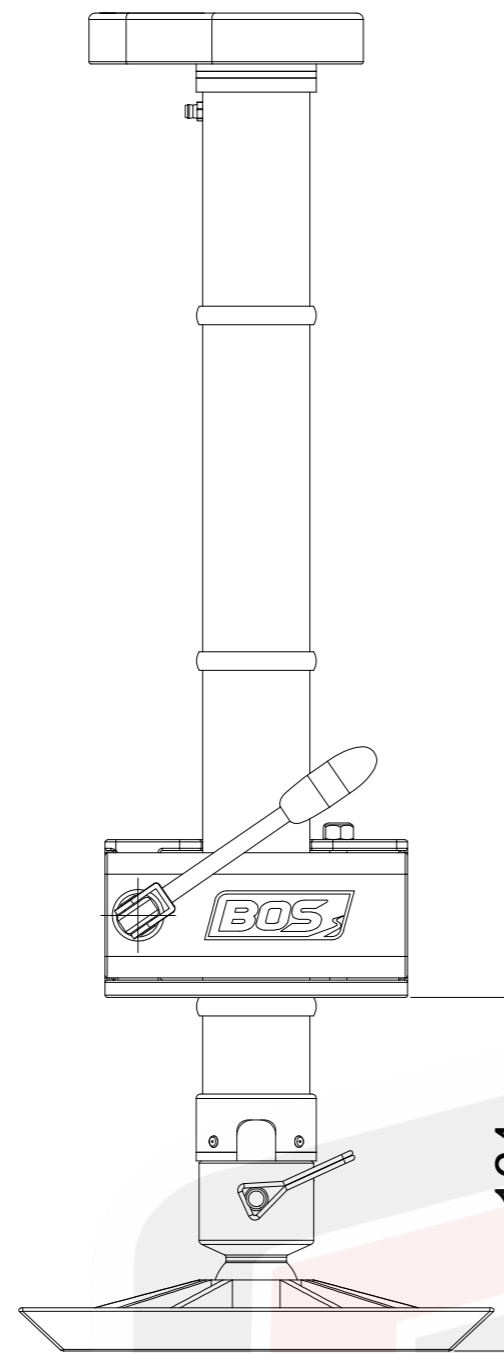
Side View



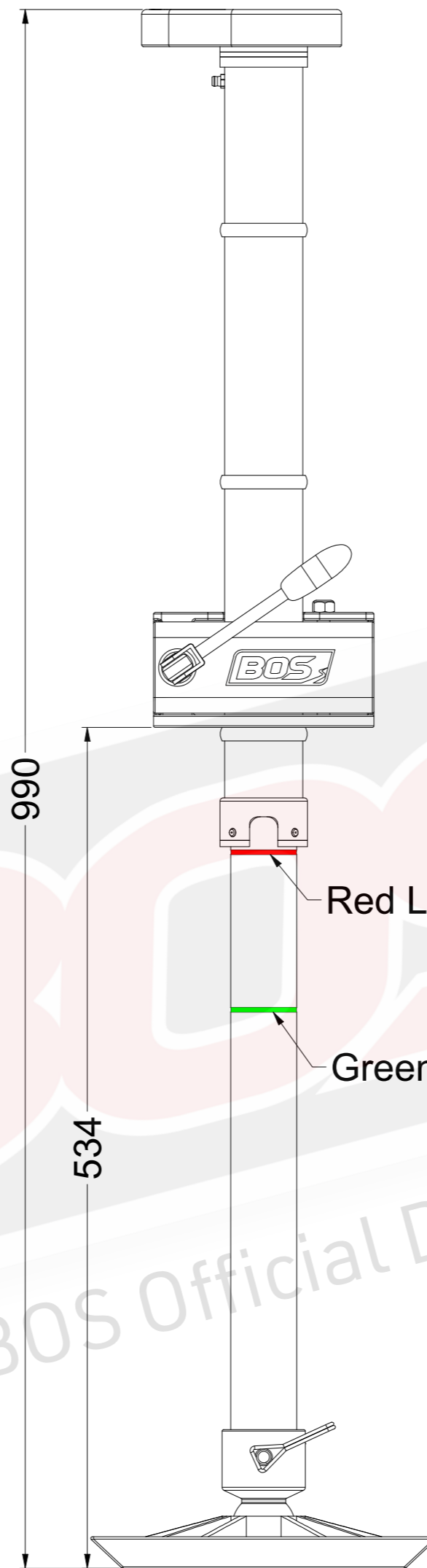
Travel Position without Base Plate



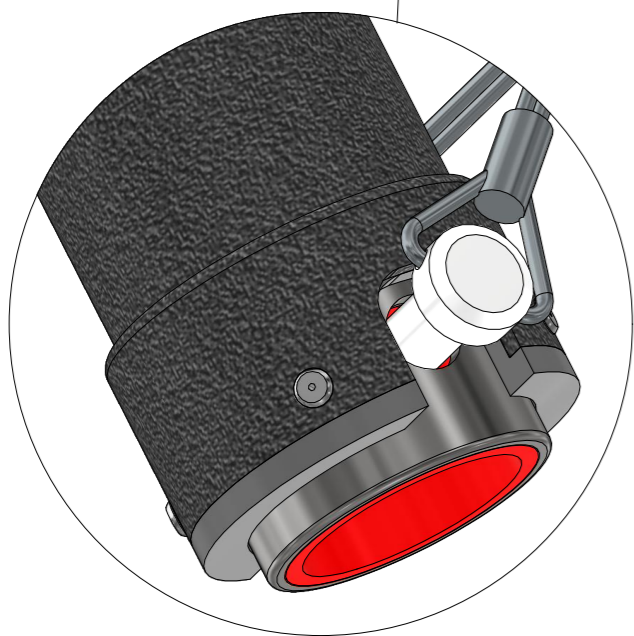
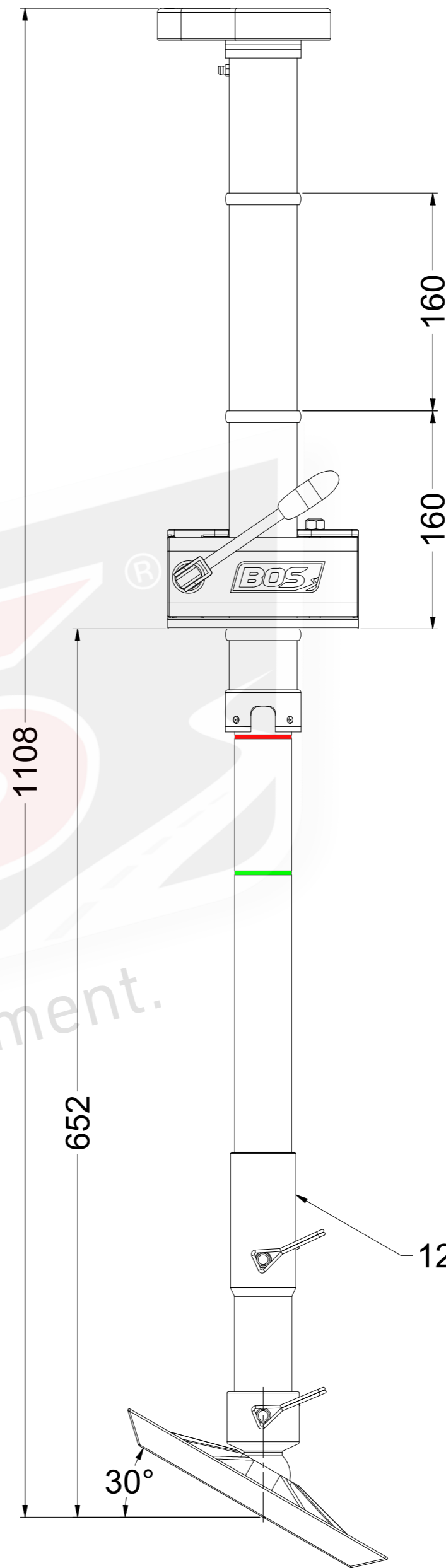
Retracted with Base Plate



Maximum Extension with Base Plate



Maximum Extension with 120mm Extension & Base Plate

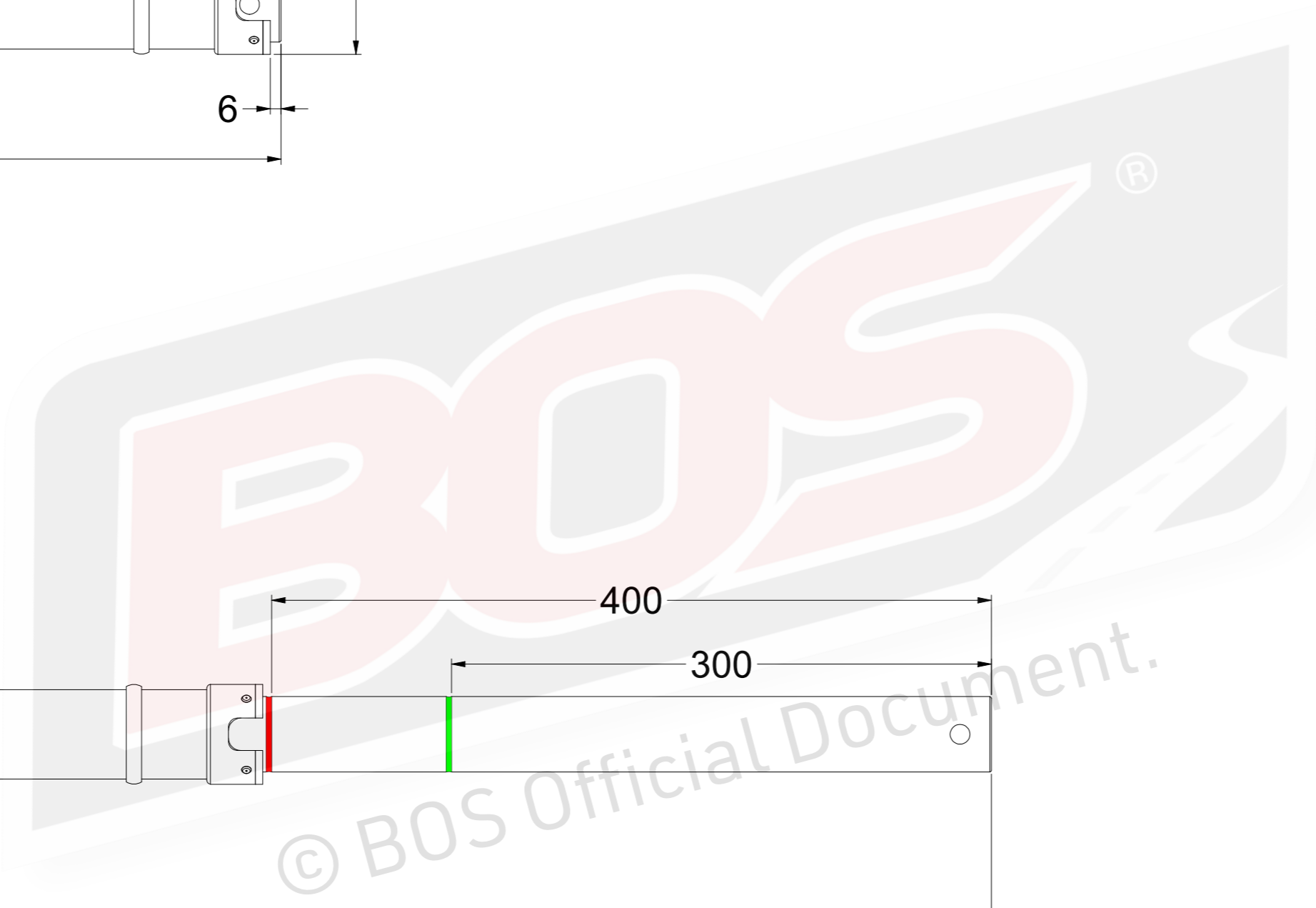
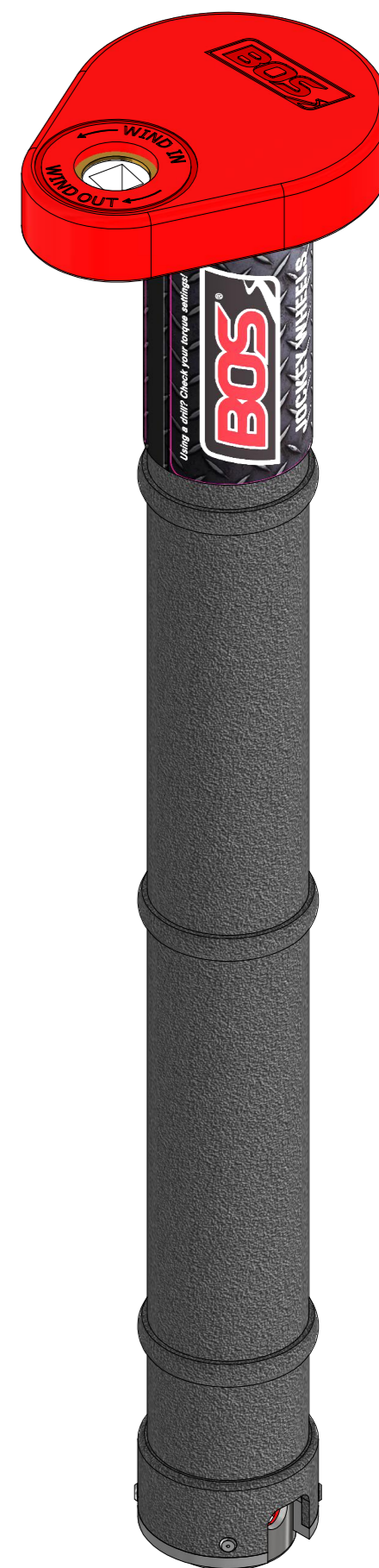
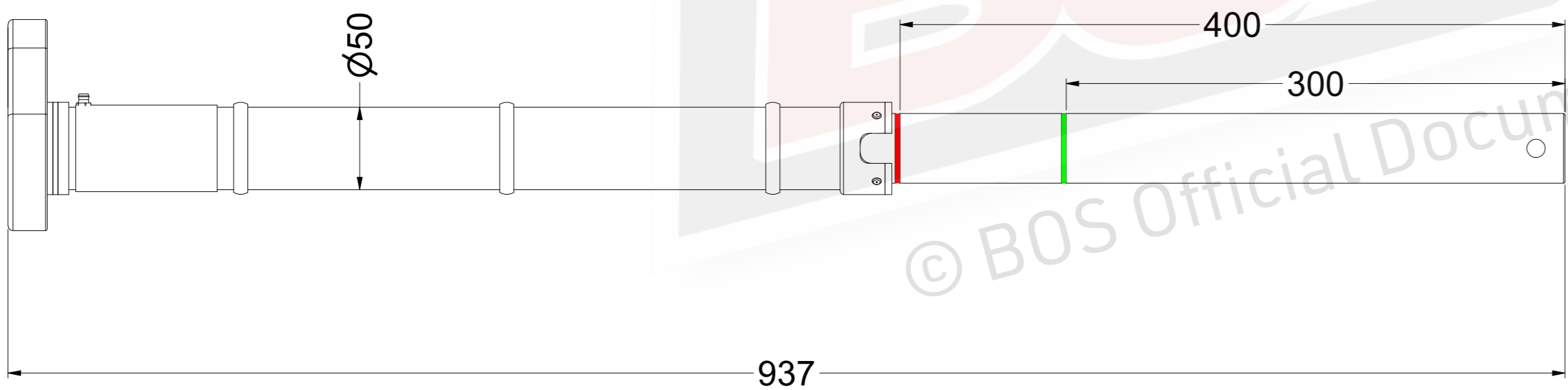
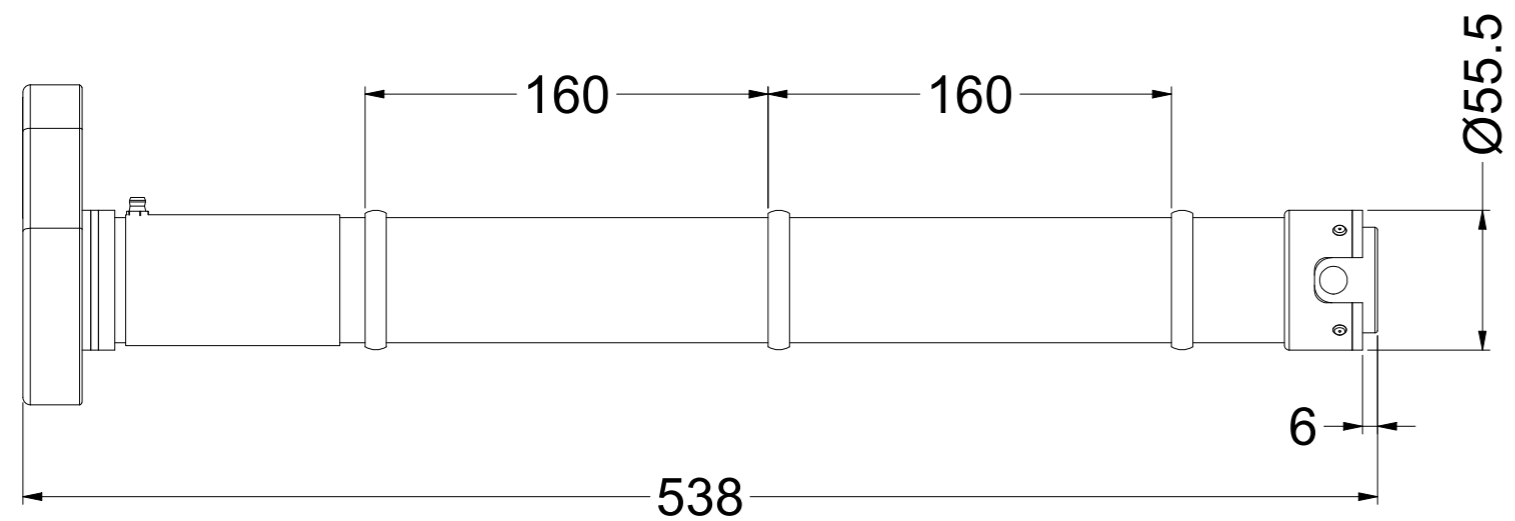


Fully retracted with Lynch Pin to leave on while travelling

### BOS 3 RIB Jockey Unit and Base Plate with Centre Mounted Clamp



PART NO.:	
473-020	
DO NOT SCALE DRAWING	SHEET:
	8

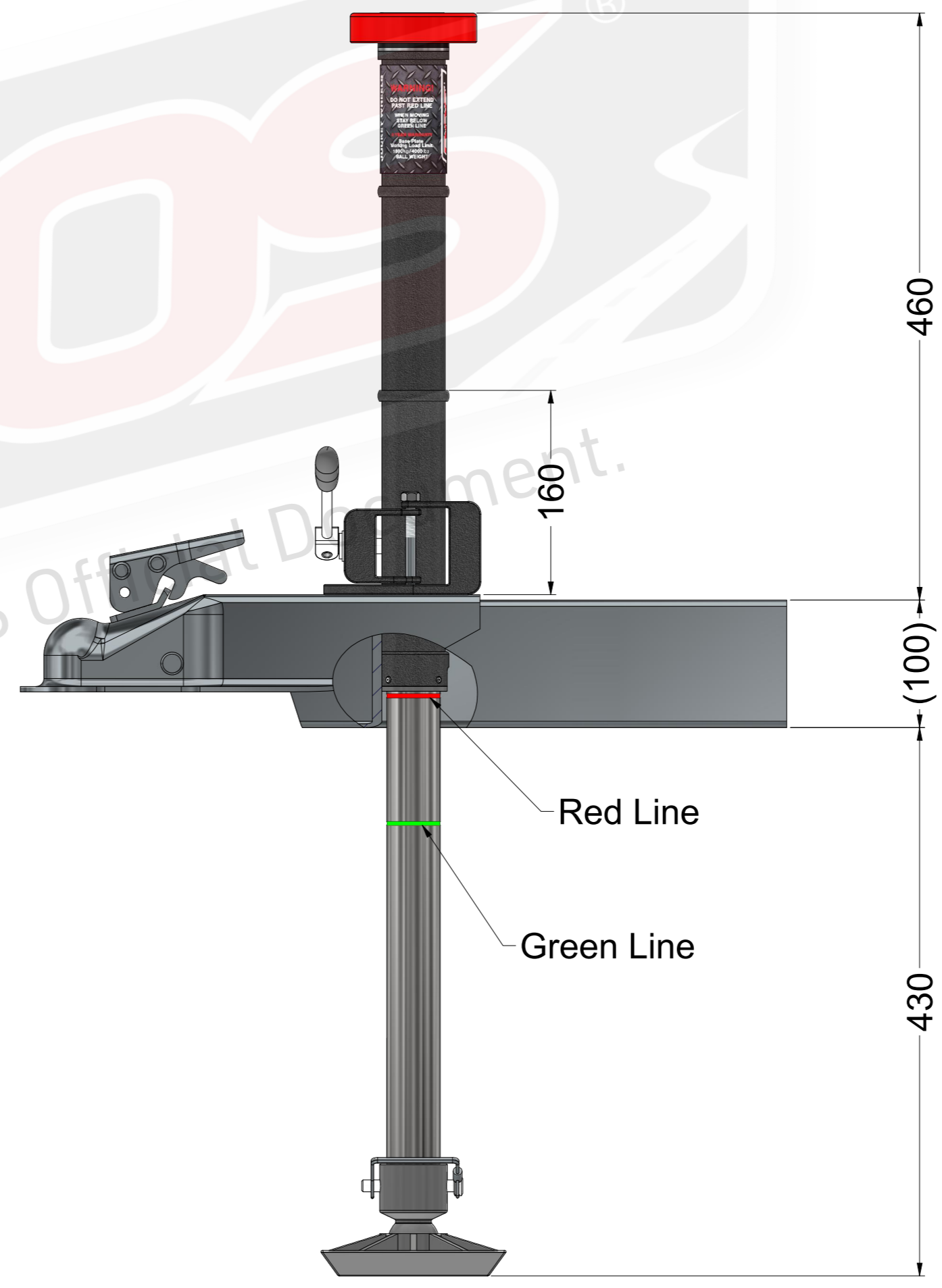
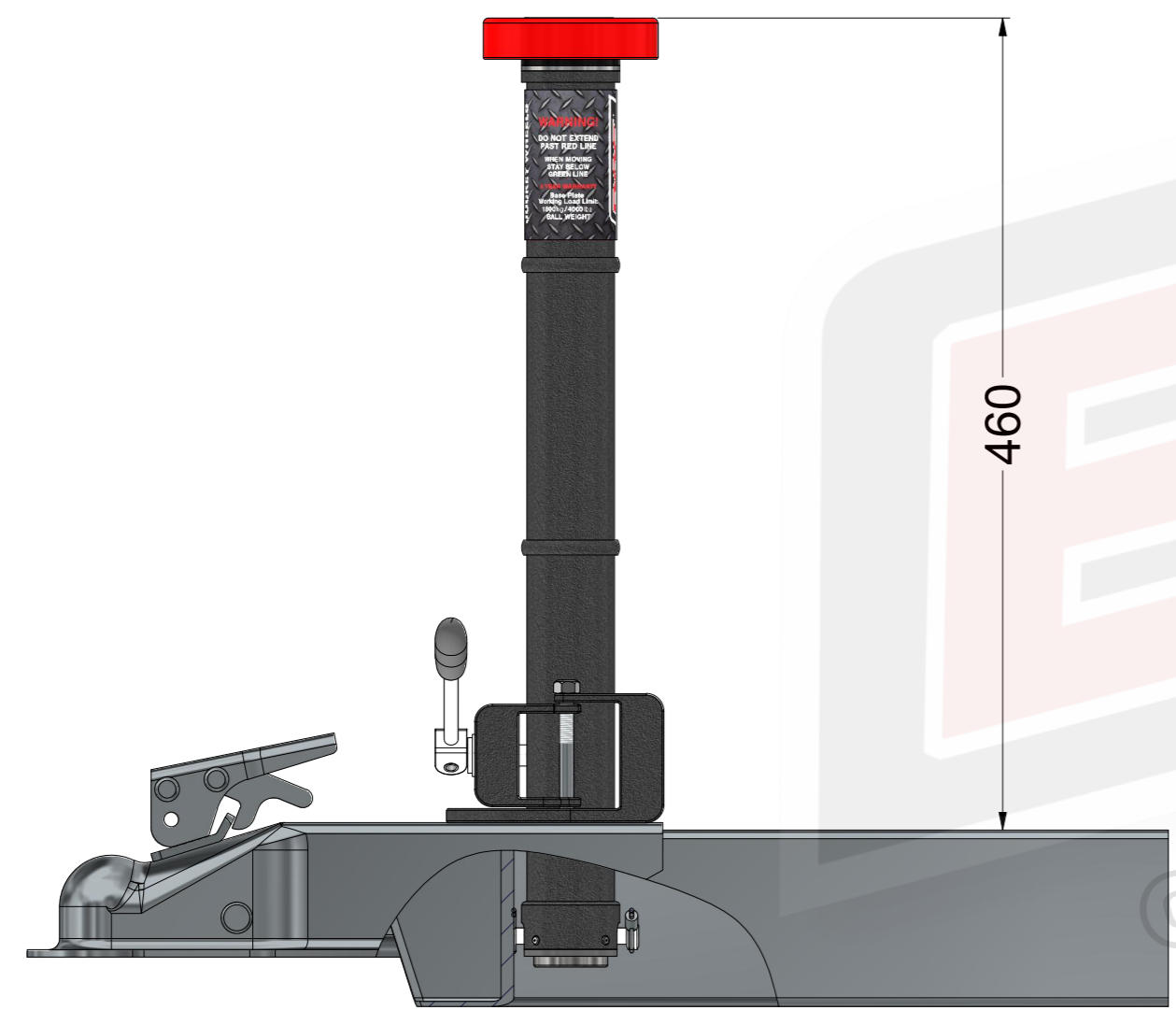
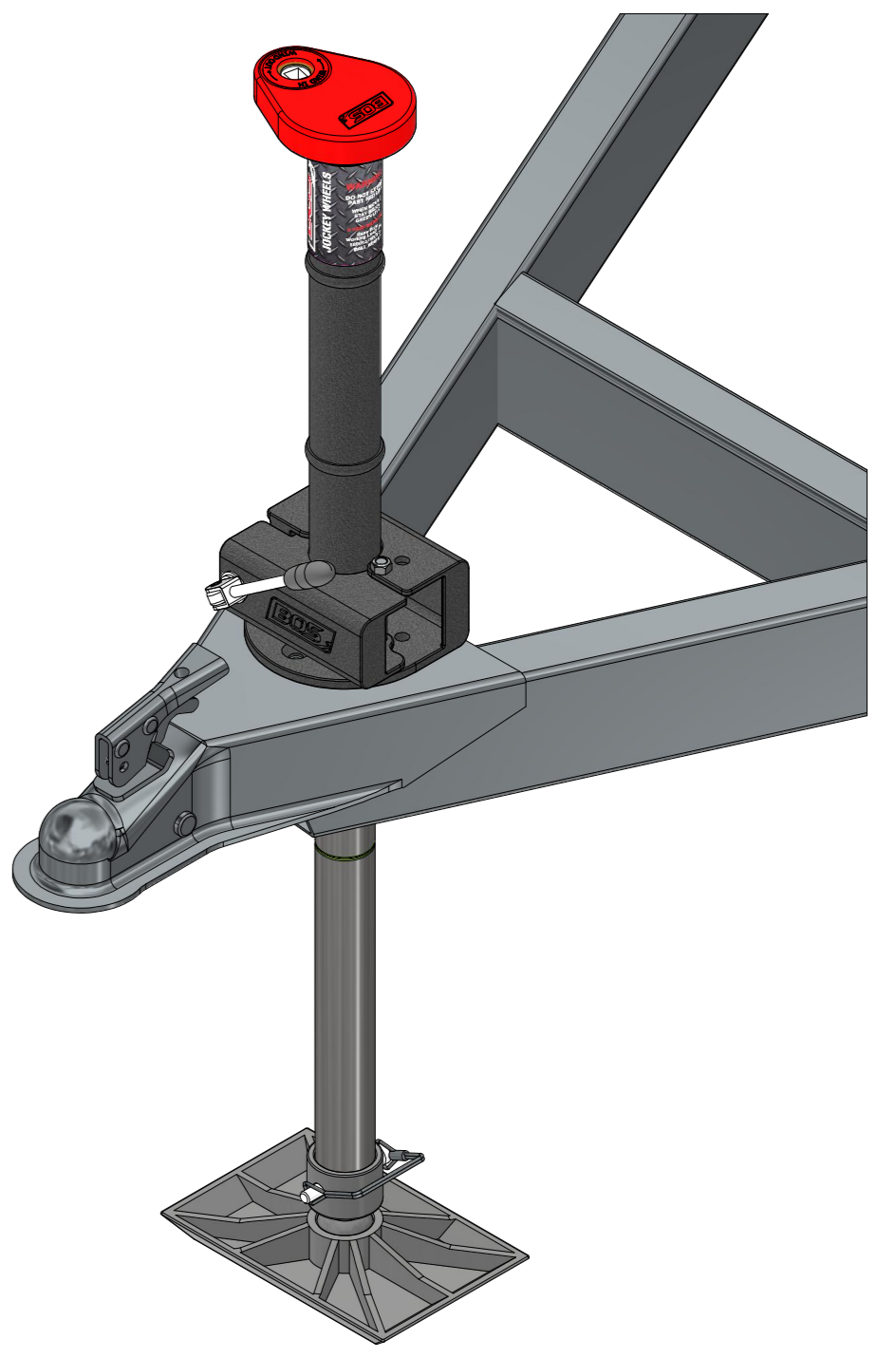
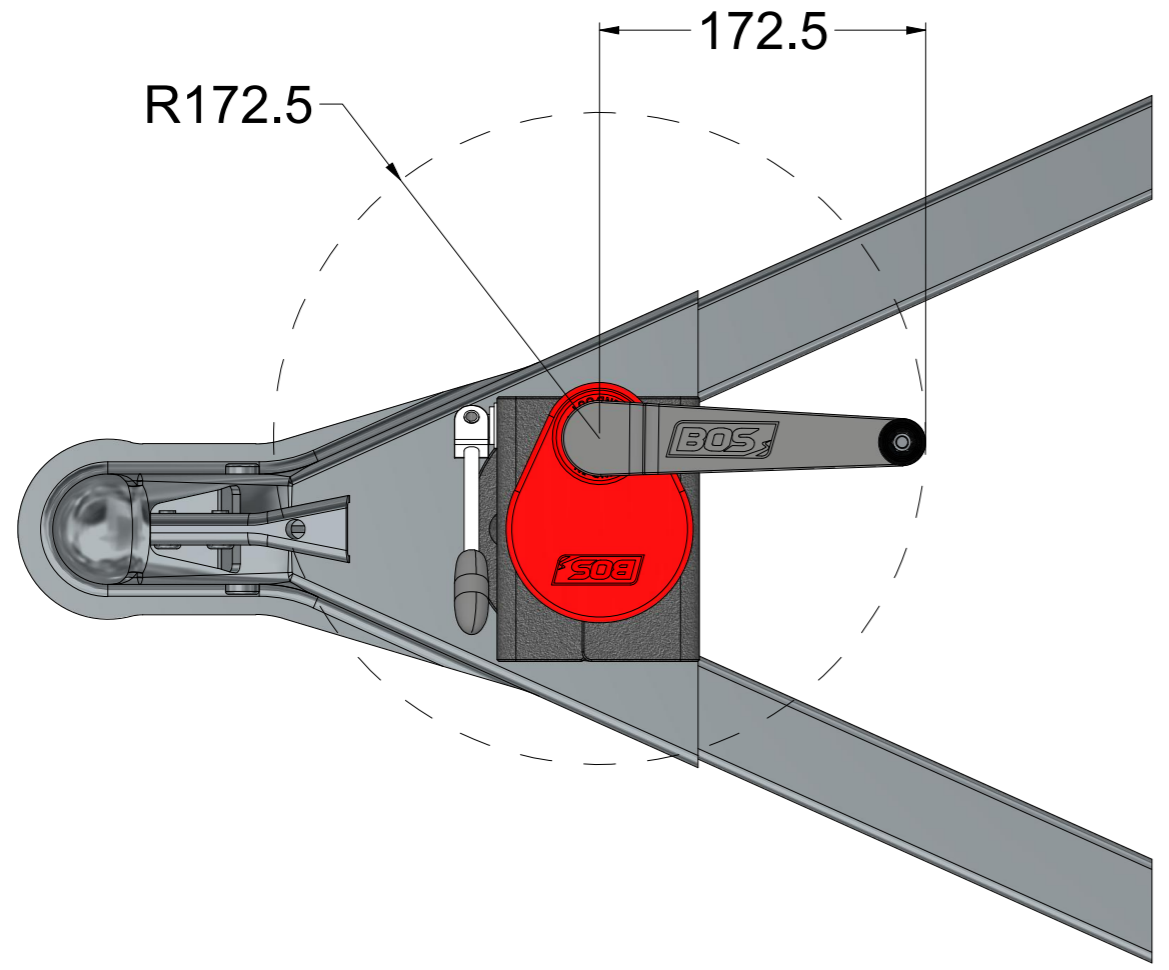


Travel: 400mm  
Weight of the Unit: 5Kg



PART NO.:  
473-002

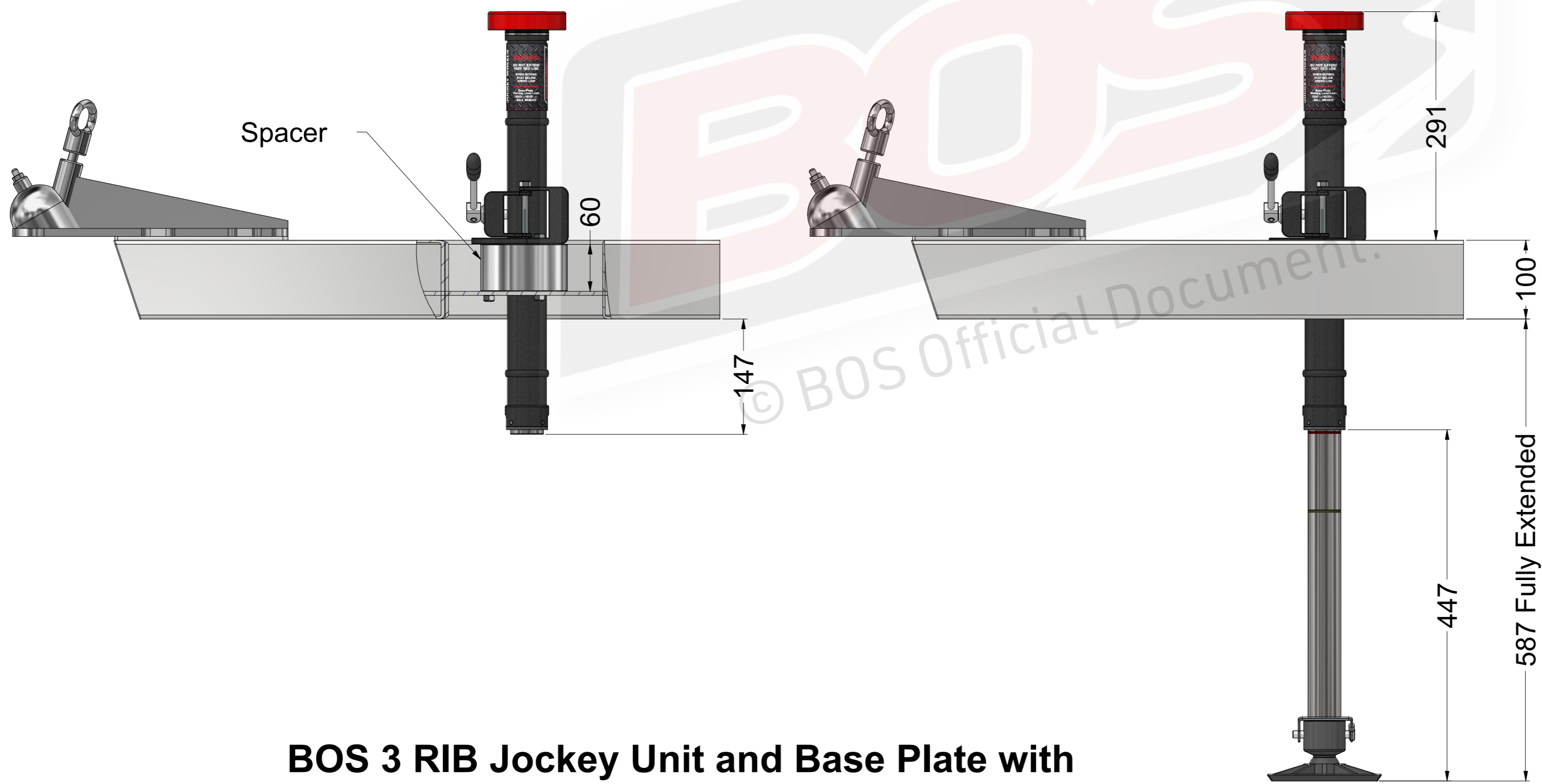
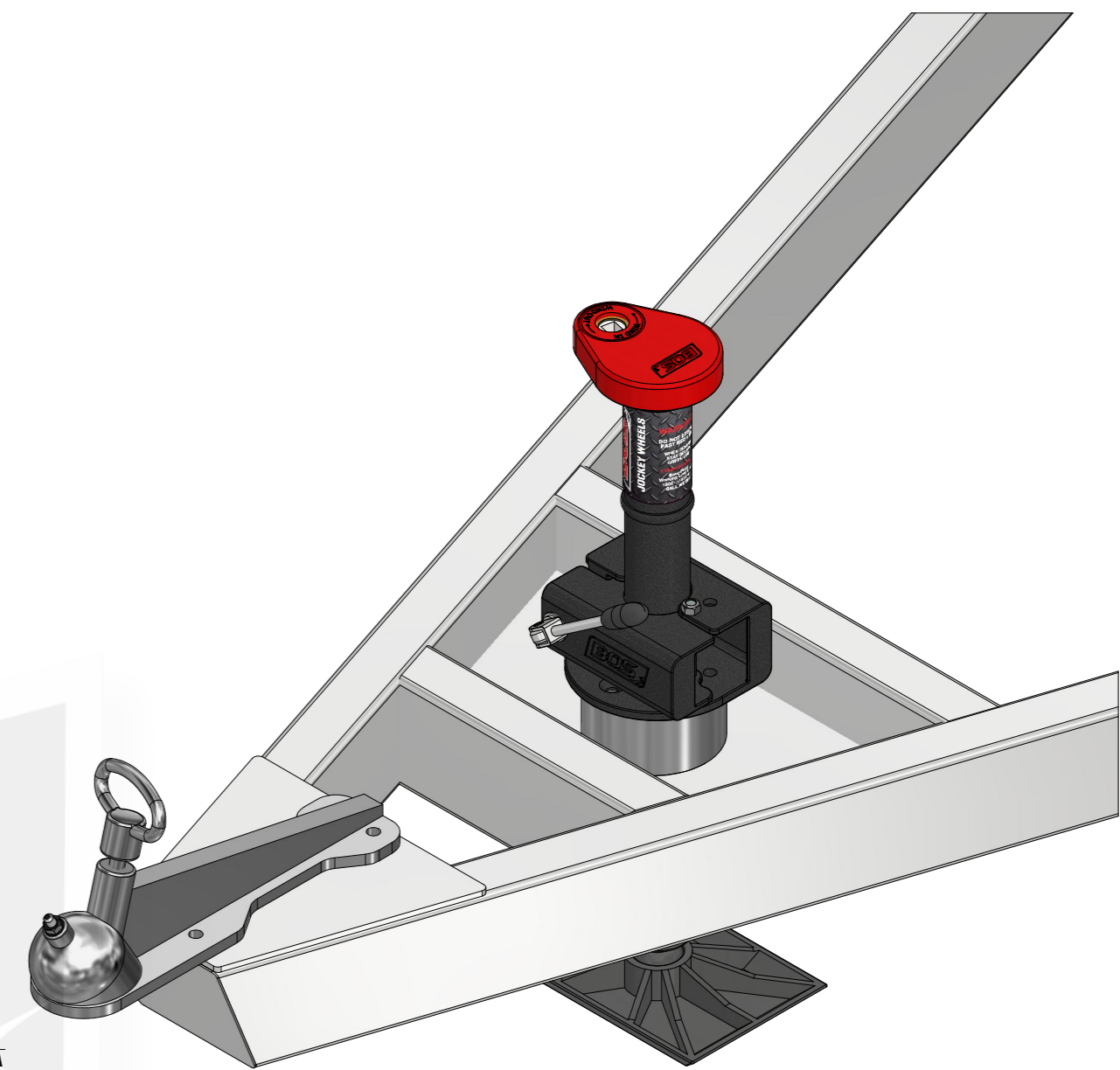
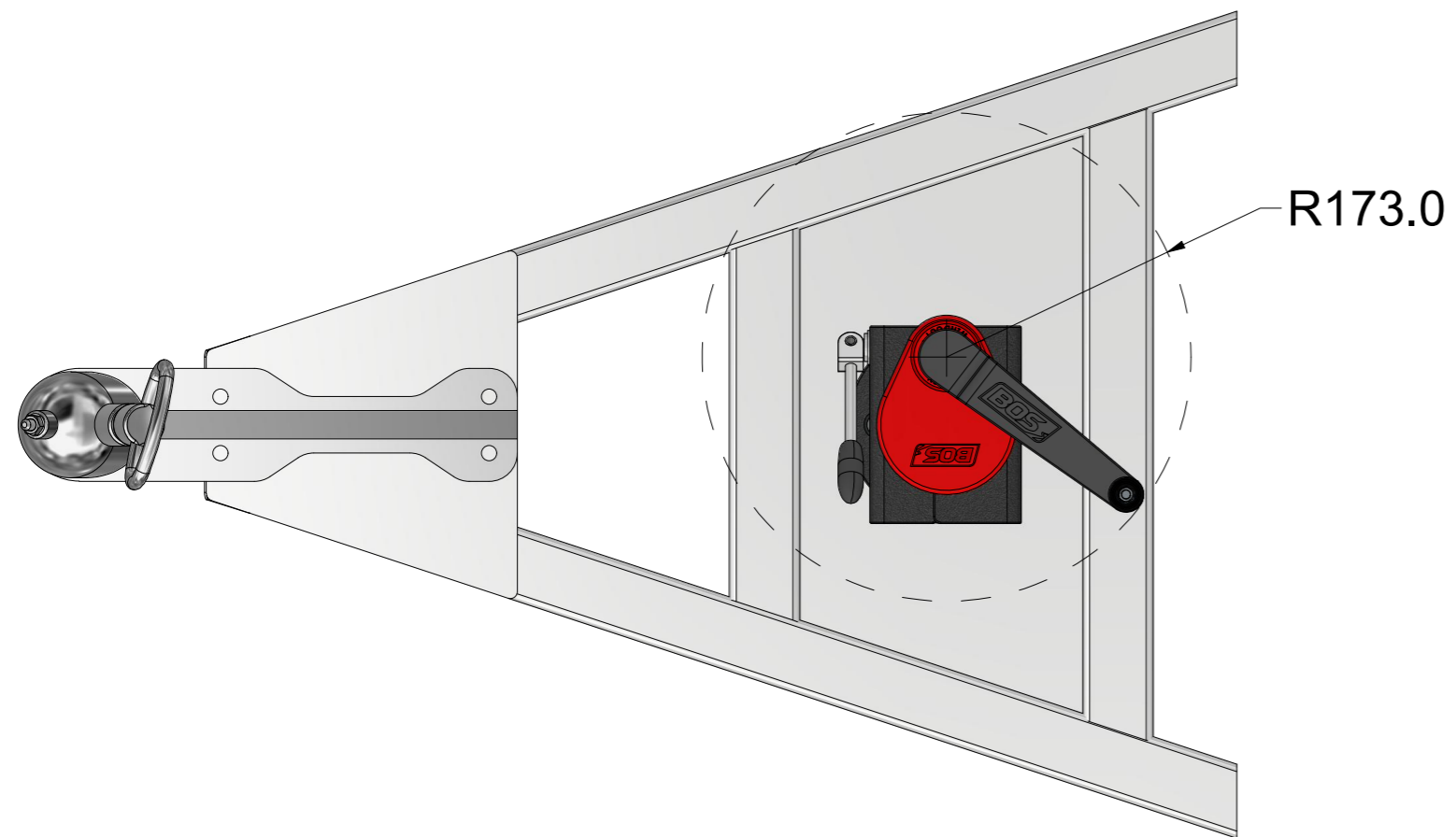
DO NOT SCALE  
DRAWING SHEET:



PART NO.:  
**473-020**

DO NOT SCALE  
DRAWING

SHEET:  
8



**BOS 3 RIB Jockey Unit and Base Plate with  
Centre Mounted Clamp with Spacer**



PART NO.:  
**473-020**

DO NOT SCALE  
DRAWING

SHEET:

8

8

7

6

5

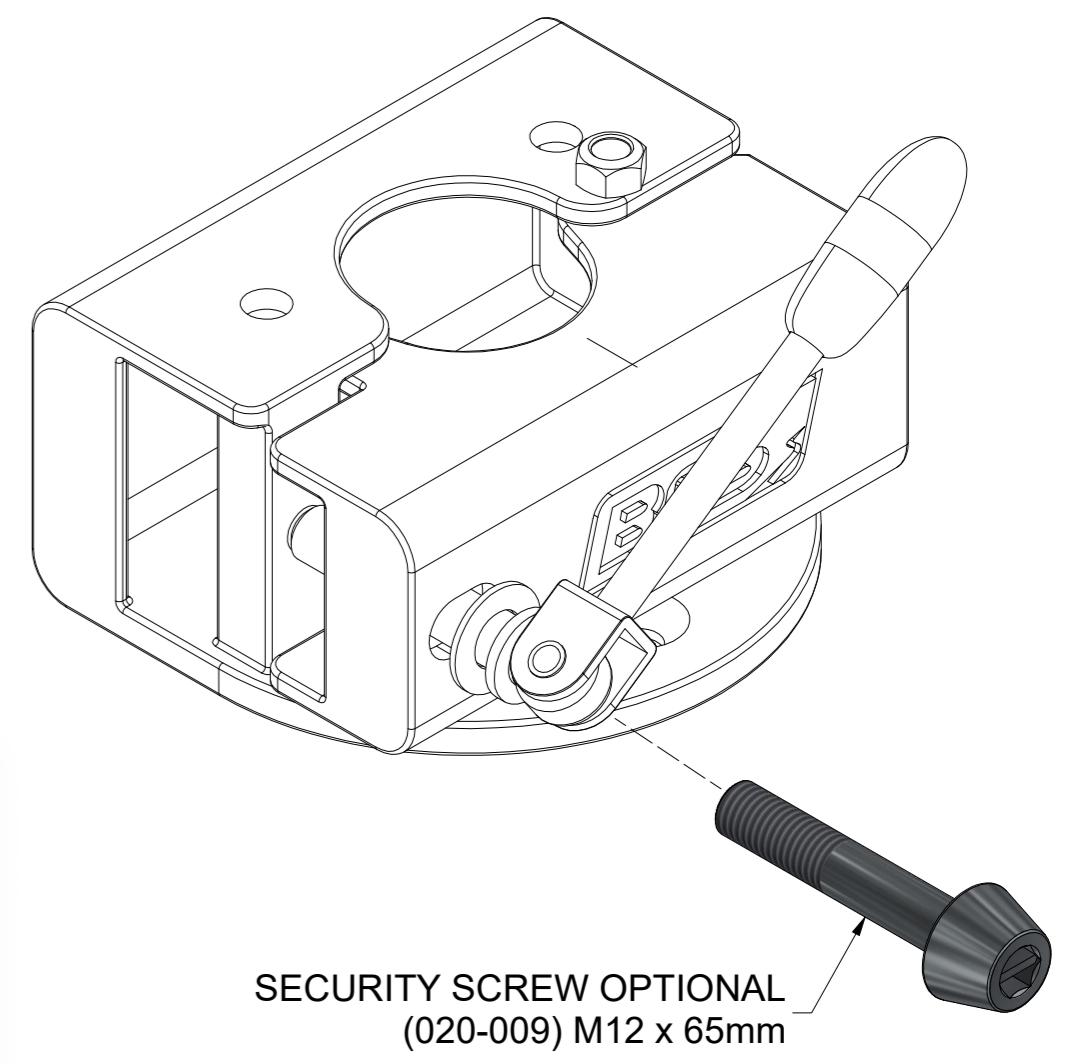
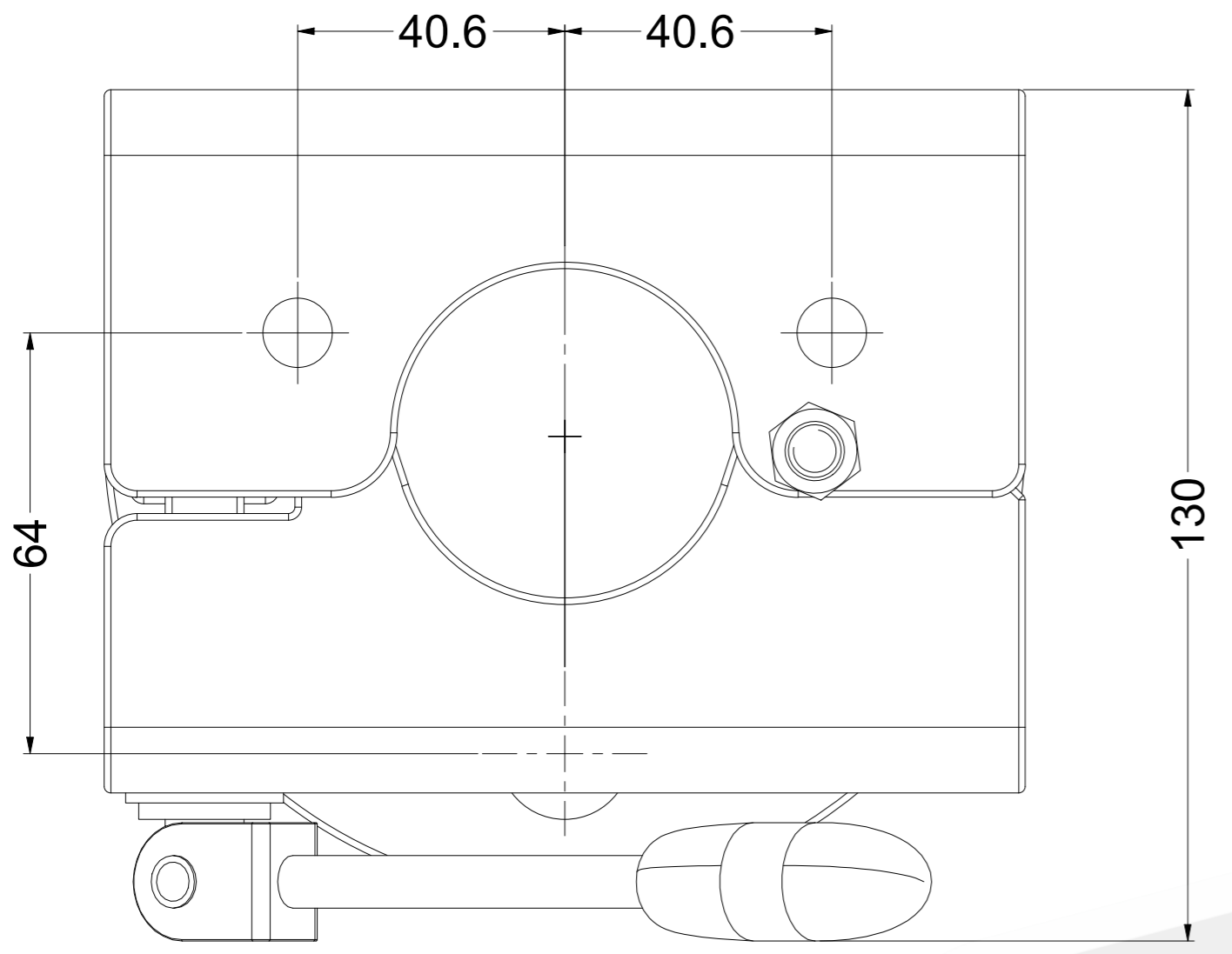
4

3

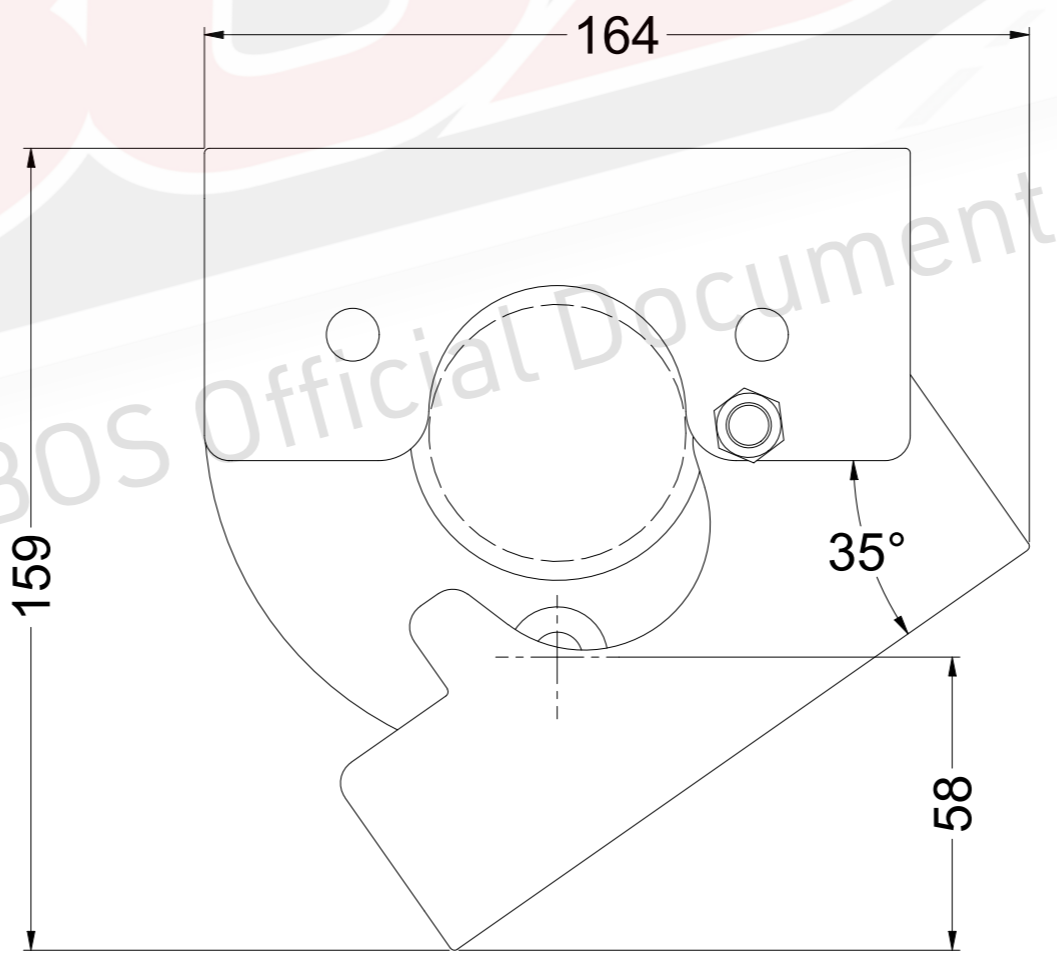
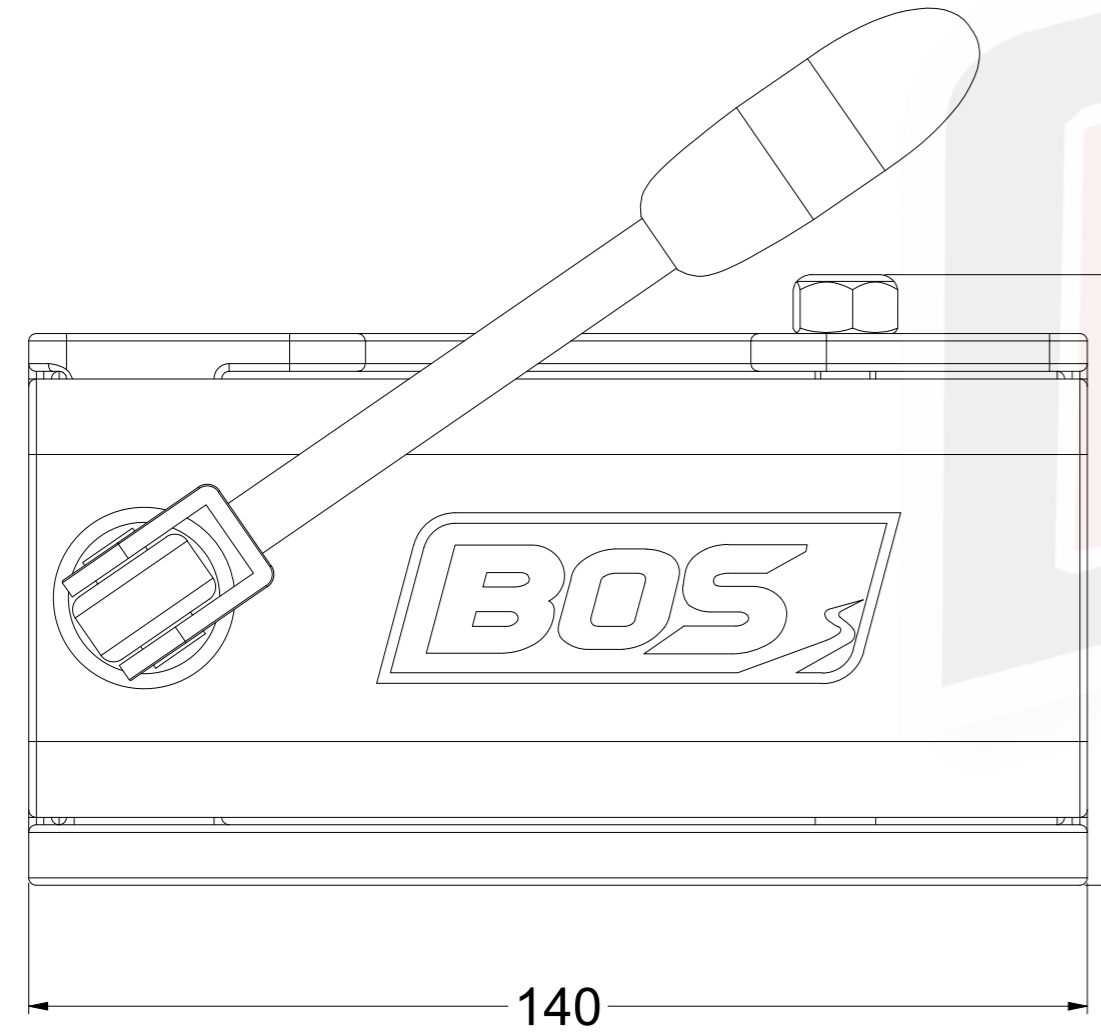
2

1

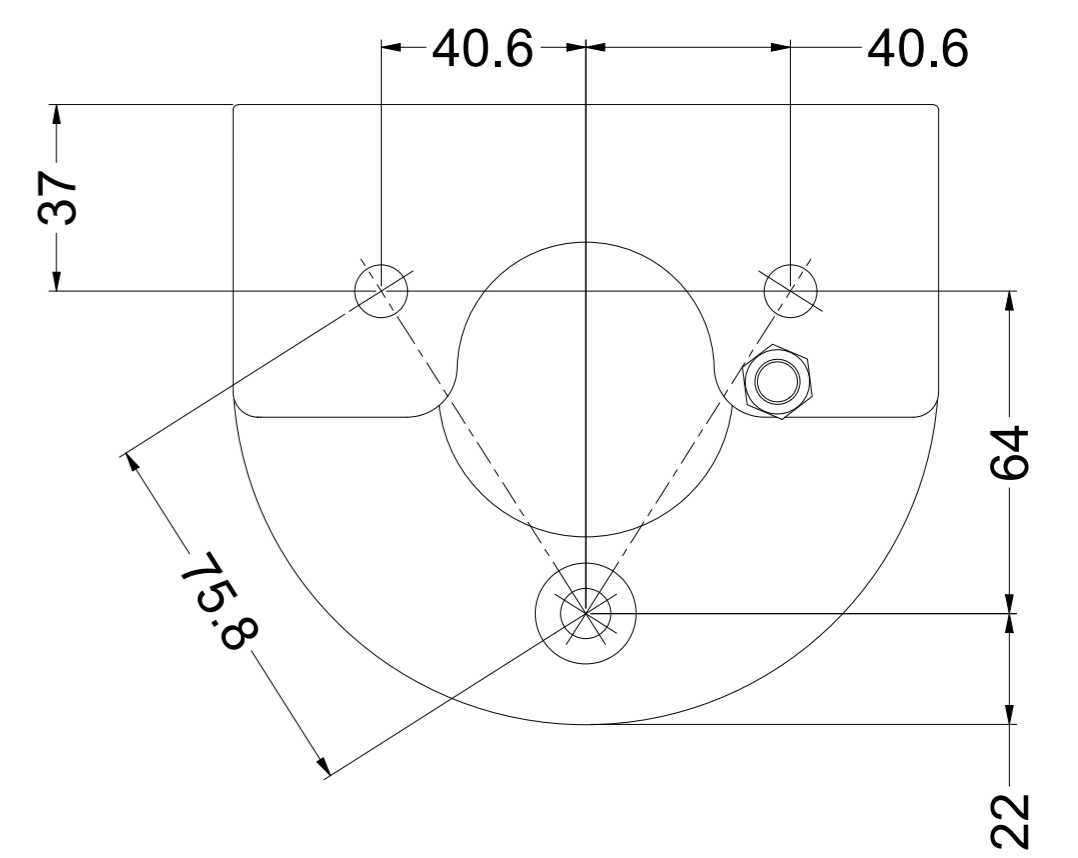
**Note:**  
Bolts are supplied with the Mounting Kit



SECURITY SCREW OPTIONAL  
(020-009) M12 x 65mm



Minimum clearance required to fit  
Jockey Unit when Clamp is opened



Mounting Holes Detail



PART NO.:	
DO NOT SCALE DRAWING	SHEET:

8

7

6

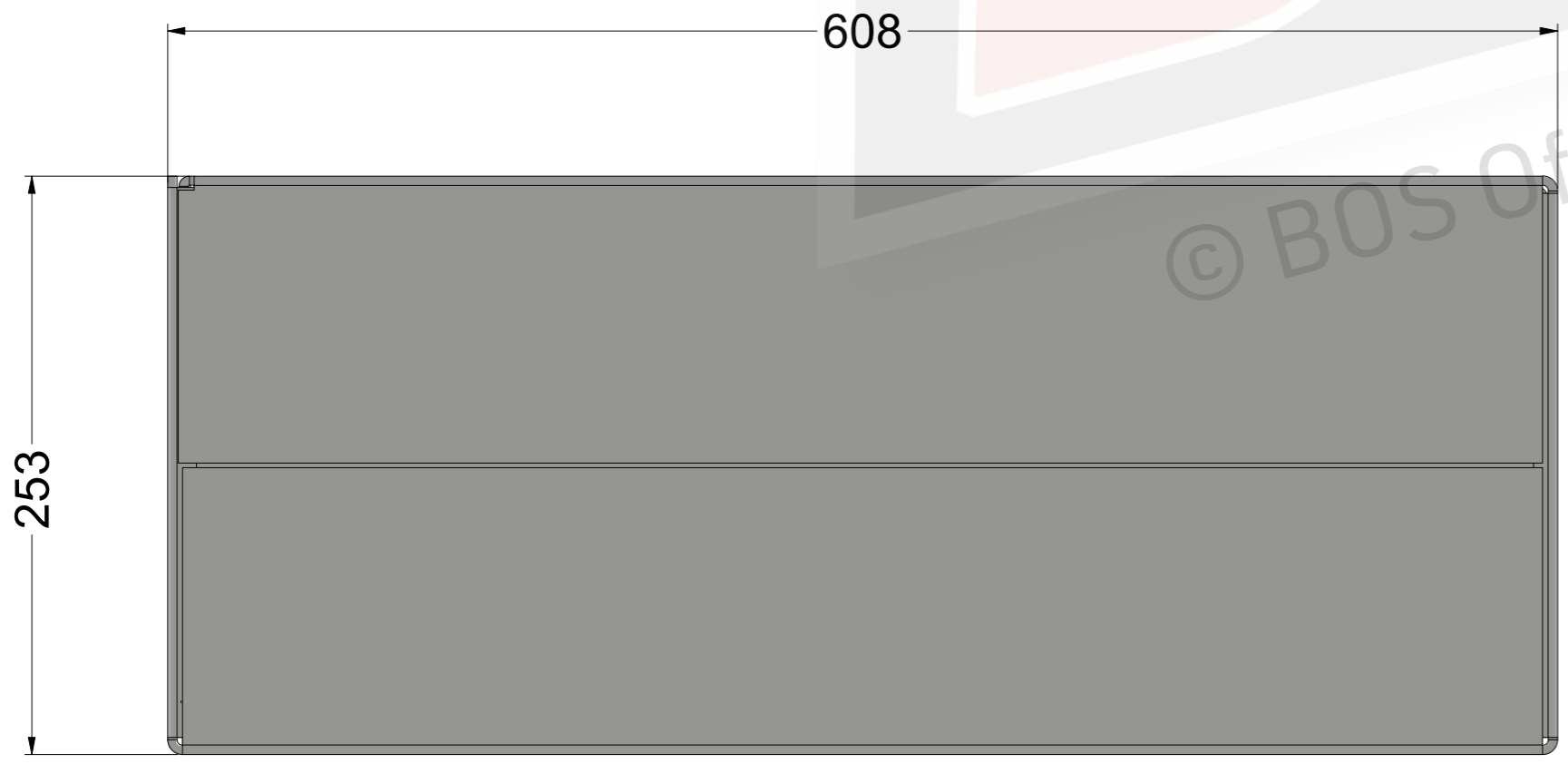
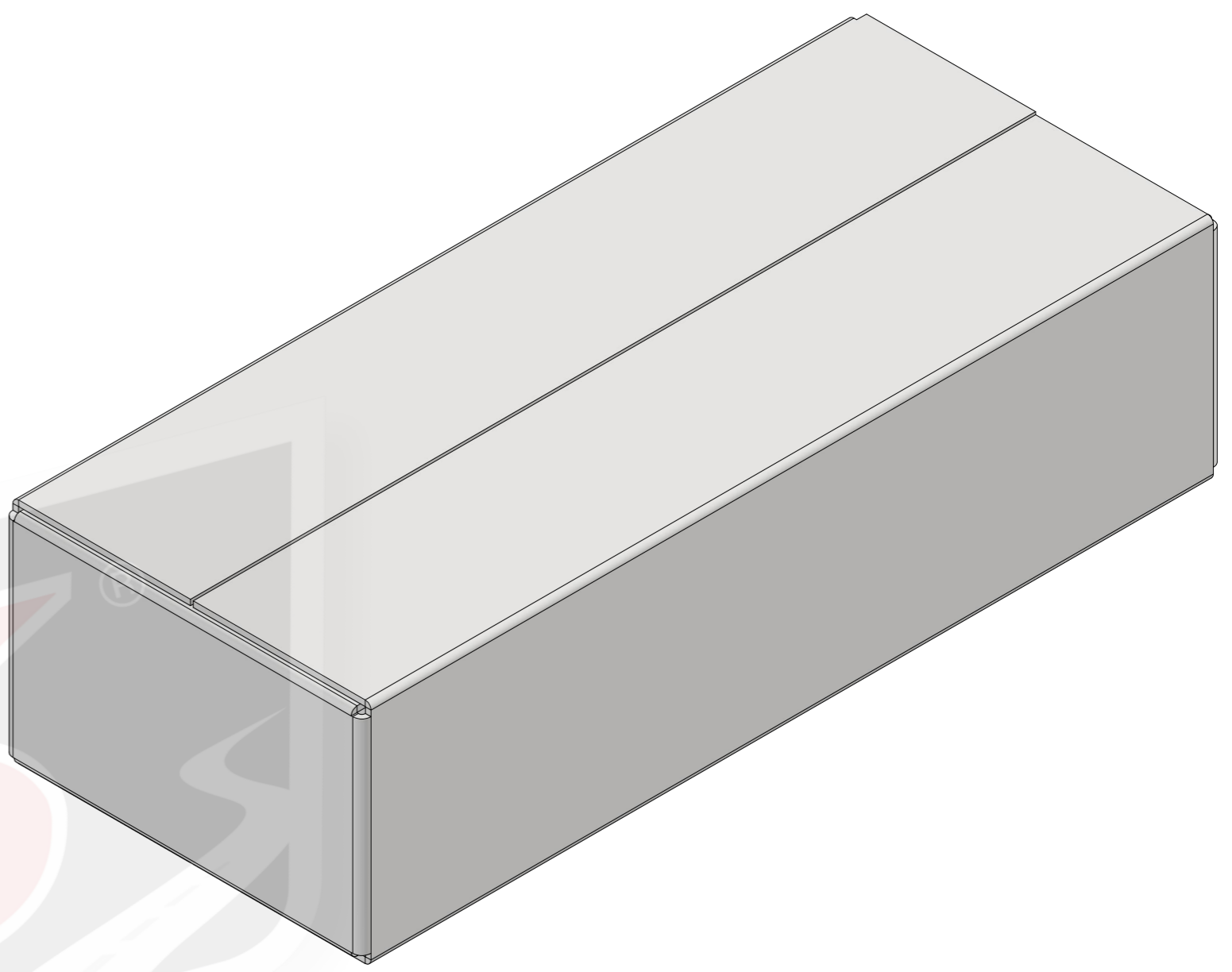
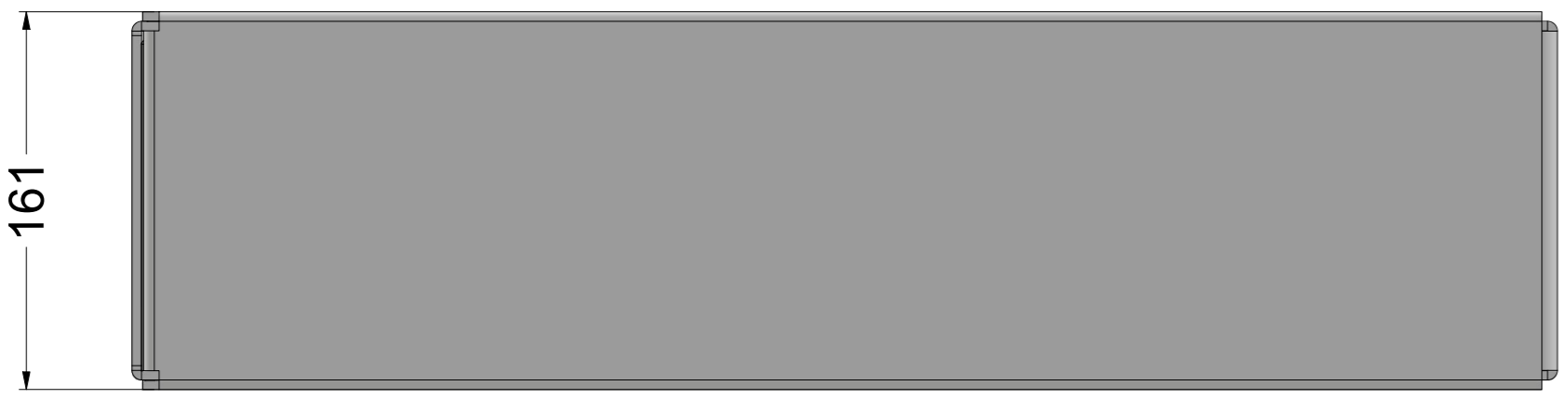
5

4

3

2

1



Length = 608mm / 24 Inch  
Width = 253mm / 10 Inch  
Height = 161mm / 6.5 Inch  
Weight = 10.0Kg / 22.1Lbs



PART NO.:	
473-020	
DO NOT SCALE DRAWING	SHEET:
8	